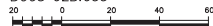


APPENDIX A



The intended plot size of this plan is  
 560mm in width by 864mm in height (D size)  
 when plotted at a scale of 1:1000.

Distances are in metres, unless otherwise indicated.

Integrated Survey Area No. 21, the District of  
 Central Saanich, NAD83 (CSRS) 3.0.0.BC.1.CRD.

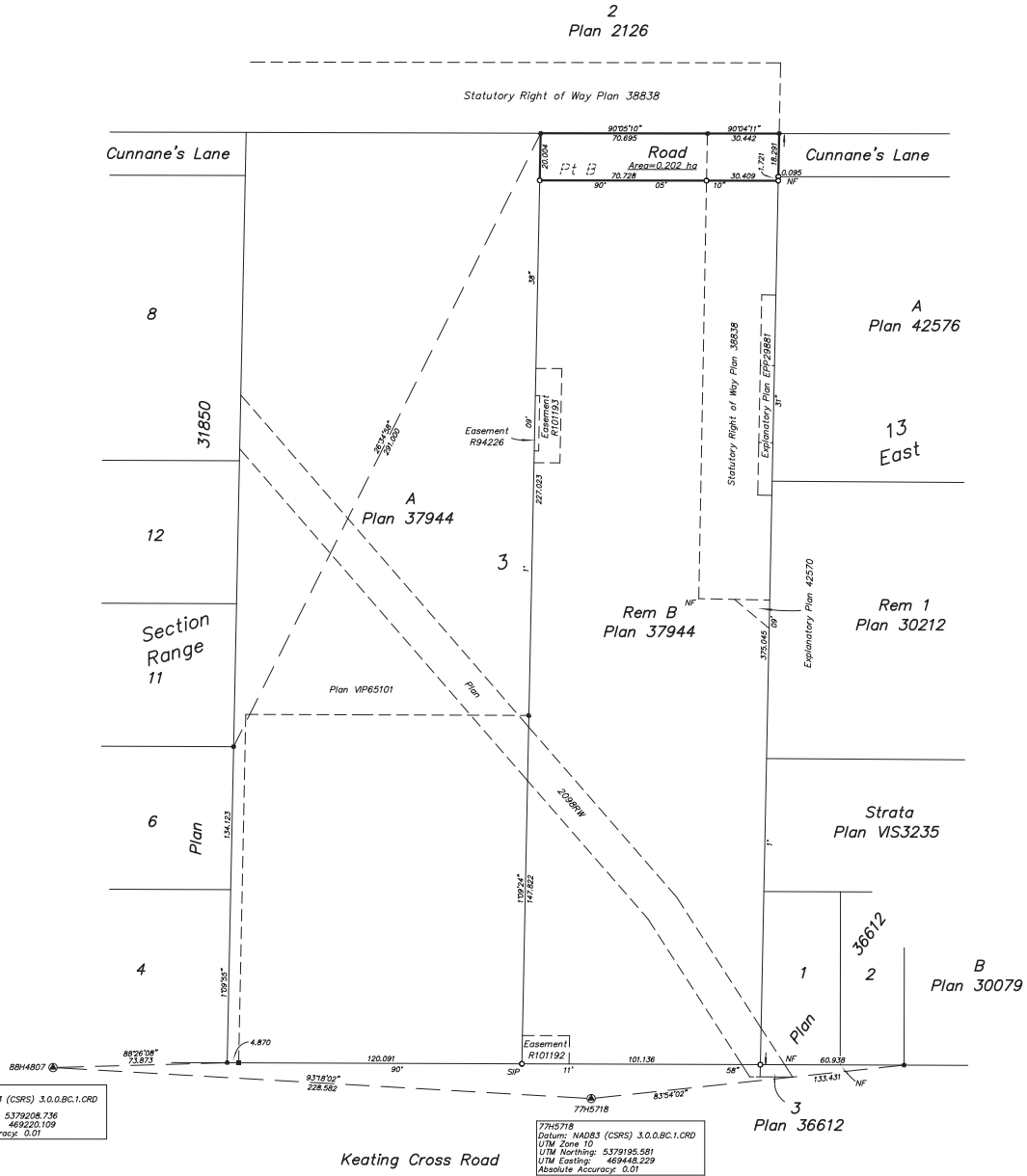
Grid bearings are derived from observations between  
 geodetic control monuments 77H5718 and 88H4807  
 and are referred to the central meridian of UTM Zone 10.

The UTM coordinates and estimated absolute positional  
 accuracy are derived from conventional survey observations  
 to geodetic control monuments 77H5718 and 88H4807.

This plan shows horizontal ground-level distances  
 unless otherwise specified. To compute grid distances  
 multiply ground-level distances by the average combined  
 factor of 0.9986040 which has been derived from  
 geodetic control monuments 77H5718 and 88H4807.

Legend:

- ⊙ Denotes Control Monument Found
- Denotes Standard Iron Post Found
- Denotes Standard Iron Post Placed
- Denotes Standard Lead Plug Found
- NF Denotes No Evidence Found
- SIP Denotes Short Iron Post Set in Asphalt



88H4807  
 Datum: NAD83 (CSRS) 3.0.0.BC.1.CRD  
 UTM Zone 10  
 UTM Northing: 5379208.736  
 UTM Easting: 469220.109  
 Absolute Accuracy: 0.01

77H5718  
 Datum: NAD83 (CSRS) 3.0.0.BC.1.CRD  
 UTM Zone 10  
 UTM Northing: 5379195.551  
 UTM Easting: 469448.229  
 Absolute Accuracy: 0.01

This plan lies within the jurisdiction  
 of the Approving Officer for the  
 District of Central Saanich.

This plan lies within the  
 Capital Regional District.

The field survey represented by this plan was  
 completed on the 10th day of October, 2023.  
 Lloyd R. P. Eakins, BCLS

Wey Mayenburg Land Surveying Inc.  
 www.weysurveyors.com  
 #4-2227 James White Boulevard  
 Sidney, BC V8L 1Z9  
 Telephone (250) 656-5155  
 Fax: 230252\ref\LE