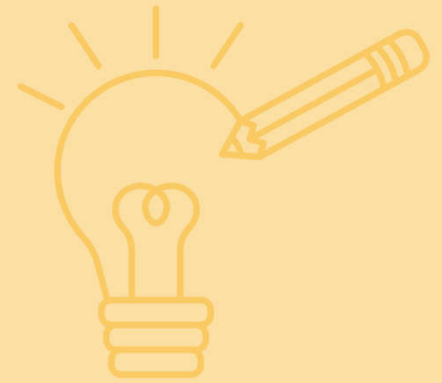


Exploring CIVIC REDEVELOPMENT



What We Heard

October 2024



What We Heard

Exploring **CIVIC REDEVELOPMENT**

Purpose

Two consistent questions were posed to participants to help guide decisions for 1903 Mount Newton Cross Road and Lot A Hovey Road.



What features would you most like to see incorporated at 1903 Mt Newton Cross Road, if possible, to best serve the community?

What features would you most like to see incorporated on Lot A Hovey Road, if possible, to best serve the community?

What We Heard

Exploring CIVIC REDEVELOPMENT

What We Did

- Open houses (3)
- Business survey
- Community pulse survey
- Written feedback



Information:

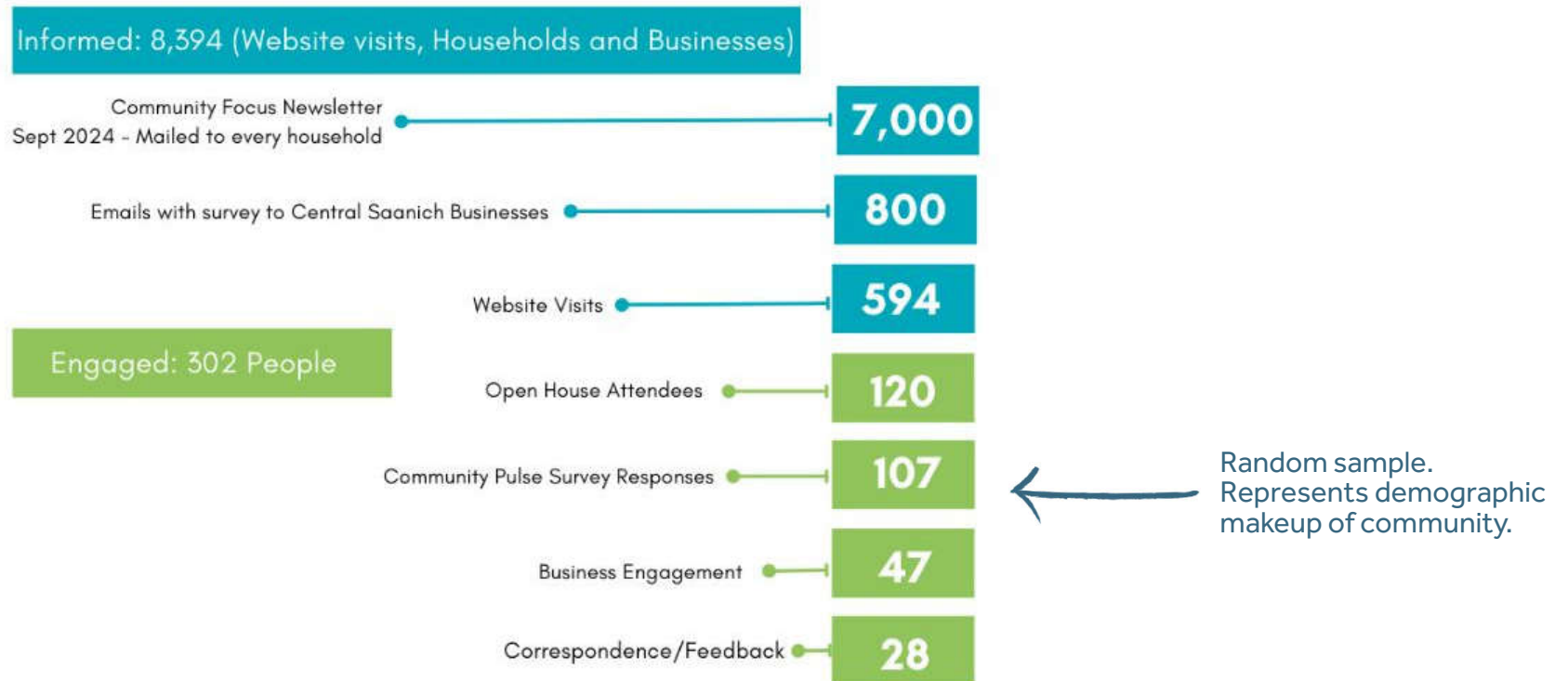
- Newsletter
- Media coverage
- Information kiosks (2)
- Ads in paper
- Roadside billboard
- Project website



What We Heard

Exploring CIVIC REDEVELOPMENT

Who We Heard From



What We Heard

Exploring **CIVIC REDEVELOPMENT**

Feedback summary

Community's feedback aligns with vision of the Saanichton Village Design Plan, OCP, etc.



Rec Needs Assessment

OCP

Saanichton Design Plan

Child Care Plan

Community Survey

Feedback summary - 1903 Mt Newton

Priorities

- Housing (significant interest in seniors' housing and family housing being included)
- Public space that encourages community gathering/significant interest in green space as well as a plaza/courtyard.
- Restaurant, café and/or pub
- Service-oriented commercial spaces (medical and childcare)

Maintaining the location for civic offices/police/fire was also a priority for some residents.

Concerns

Growth, preservation of rural culture and the eventual design (height and density) of a future development were the themes that emerged when residents were asked about potential concerns.

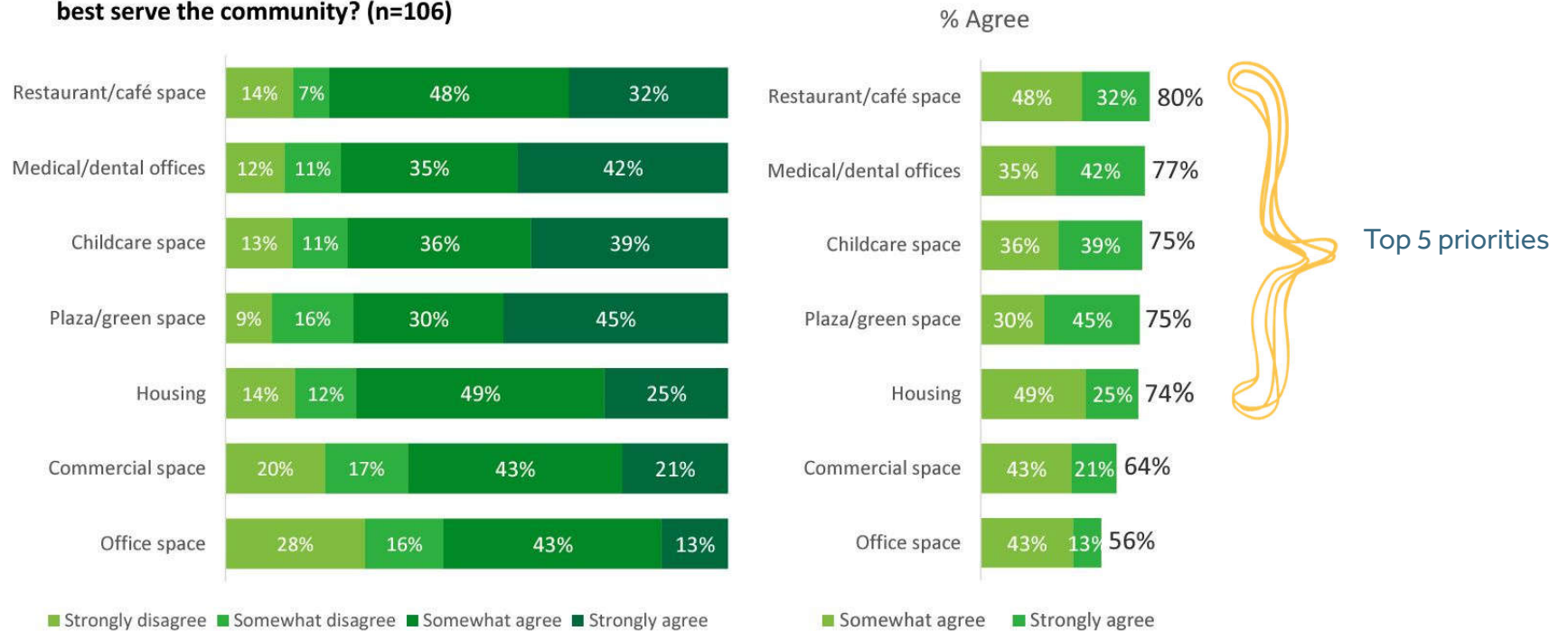


What We Heard

Exploring CIVIC REDEVELOPMENT

Sample survey - 1903 Mt Newton

Q: To what extent do you agree that the following features should be incorporated into the site to best serve the community? (n=106)



Feedback summary - Lot A Hovey Road

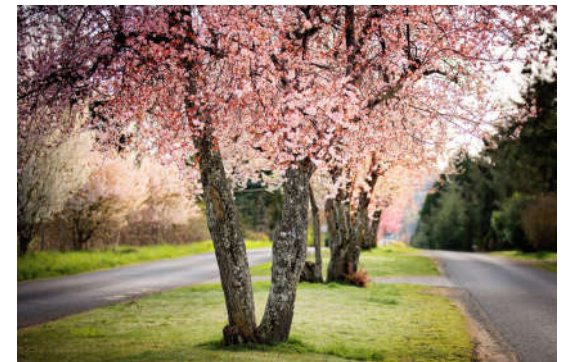
Priorities

- Recreation (significant interest/support)
- Community space = Multi-use rooms for community rentals \ Community spaces (seniors' services, childcare and child-friendly spaces and flexible spaces)
- Greenspace, plaza, courtyard
- Small food services like food trucks

Concerns

Changes to the character of Hovey Road as well as traffic/access were the main areas of concern participants shared when asked.

The District's decisions to relocate the municipal hall from the existing site at 1903 Mt Newton and expropriate the lot on Hovey Road for redevelopment was a topic of concern for some residents and more common in the early stages of engagement.

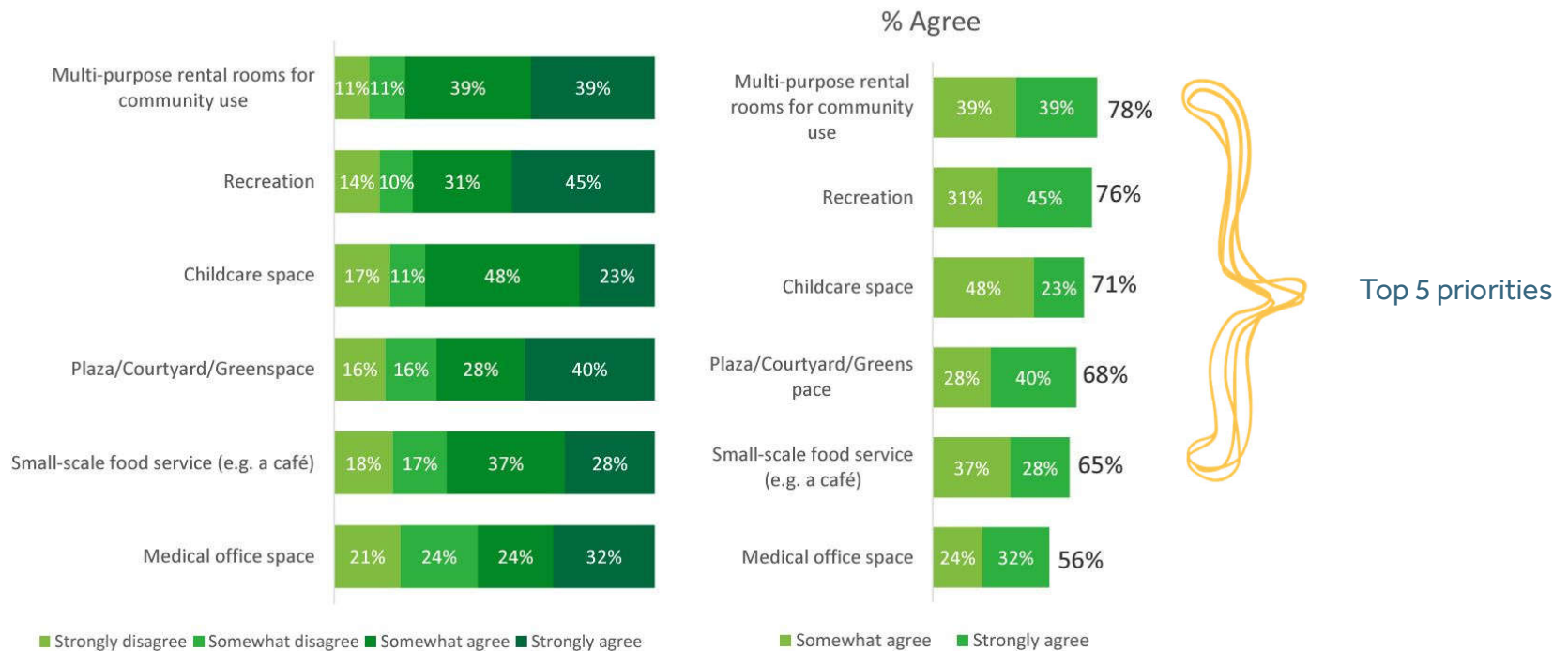


What We Heard

Exploring CIVIC REDEVELOPMENT

Sample survey - Hovey Road

Q: To what extent do you agree that the following features should be incorporated into the site to best serve the community? (n=107)



What We Heard

Exploring **CIVIC REDEVELOPMENT**

